

Maturin Pond Walking Trail

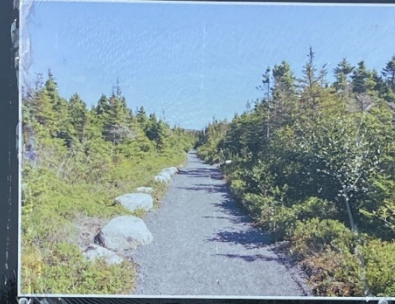
The Maturin Pond Walking Trail in Long Harbour is a hidden gem. It's approximately 2.2km in length and has the most beautiful natural scenery. The trail is an easy walk with a mixture of gravel path and boardwalk. It has multiple access points. Jump on the trail from behind the Municipal Complex on Middle Pond Road, or from behind the Fire Hall on Main Street. You can also access the trail from the Dock, the local swimming area on Pumphouse Road.

Our Maturin Pond Walking Trail connects to our Middle Pond ATV Trail. The ATV Trail is used by the more experienced hikers. The pedestrian bridge is a beautiful addition to our trail system. It allows hikers and outdoor enthusiasts to access Long Harbour-Mount Arlington Heights beautiful back country.

Come out and enjoy our trails!



MATURIN POND WALKING TRAIL



PERMITTED TRAIL USES



TRAIL RULES

- Use at Own Risk
- Dogs must be leashed
- No Motorized Vehicles Permitted on Trail
- Respect our Environment
- It's yours, Keep it Clean

THIS TRAIL IS NOT MAINTAINED IN WINTER

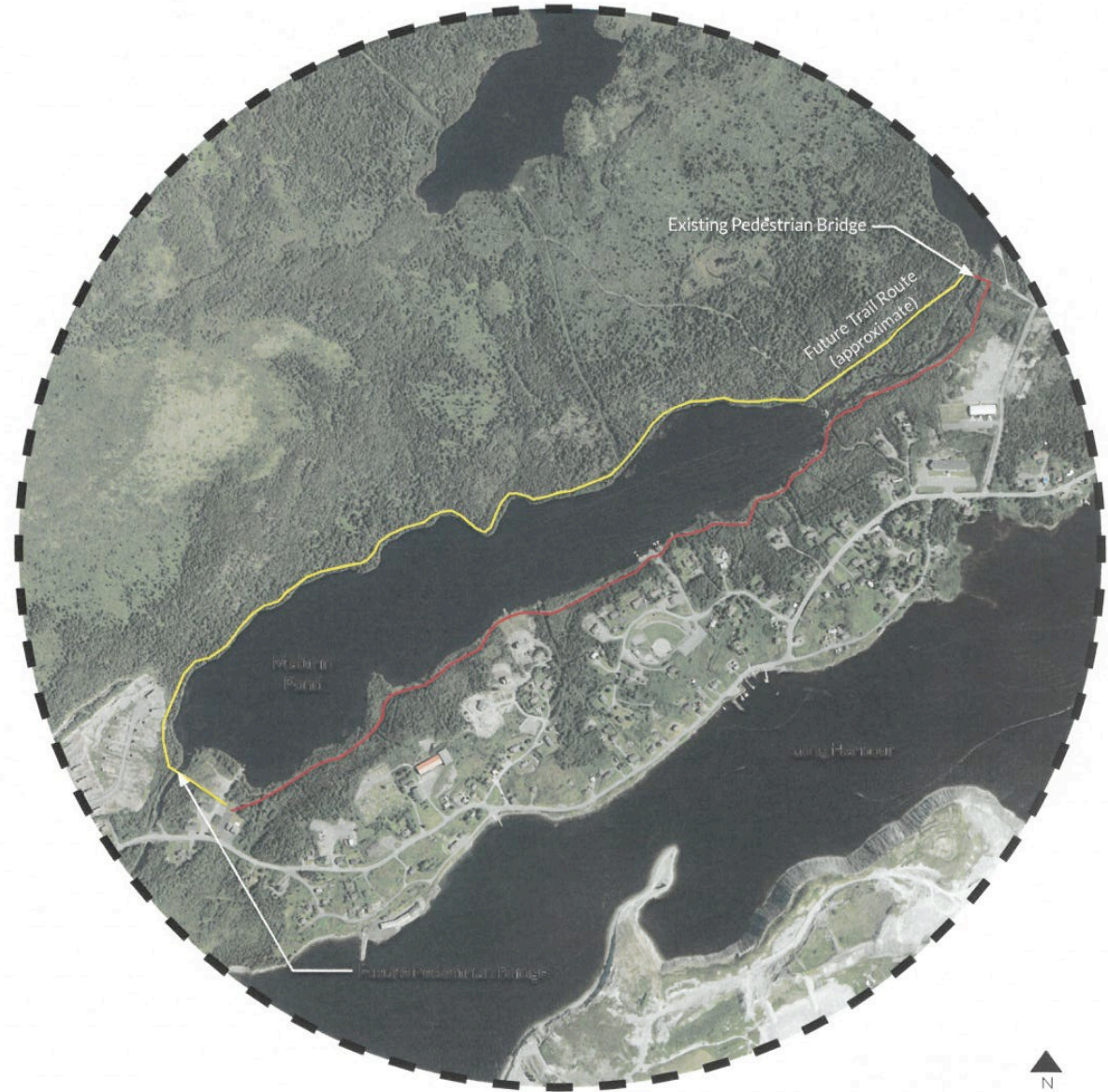
USE AT OWN RISK

Maturin Pond Walking Trail

Long Harbour-Mount Arlington Heights

Red Line - Existing Trail

Yellow Line - Proposed New Trail



**MATURIN POND
WALKING TRAIL**



PERMITTED TRAIL USES

-  Hiking
-  Bicycling
-  Canoeing
-  Kayaking
-  Mountain Biking
-  ATVs
-  Horses

TRAIL RULES

- *Open all year, but closed in winter
- *No motor vehicles
- *No off-trail travel
- *Respect our Environment
- *11 Hours, Day to Dawn

**THIS TRAIL IS NOT
MAINTAINED IN WINTER**

USE AT OWN RISK



Scenic Maturin Pond

Photo taken from
the Walking Trail







- The Swim Dock



**Sit for a spell
and enjoy the
View!**



**Listen for the
bird songs and
the running
brook as you
enjoy this
beautiful
walking trail.**



Harrys - “The Old Swimming Hole”



Welcome to the Middle Pond ATV Trail



-
- Middle Pond ATV Bridge



-
- A Beautiful Ride!





The Middle Pond ATV Trail
is used by the more
experienced hikers!

-
- **A Winter Wonderland**

